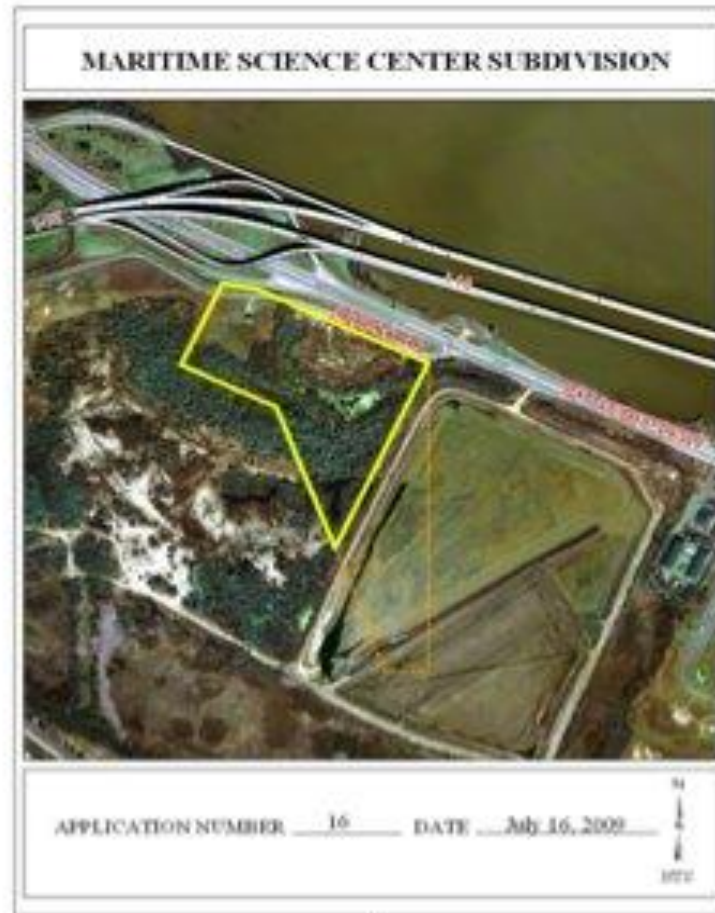


# MARITIME SCIENCE TRAINING CENTER

Alabama Industrial Development  
Training

# Aerial View of Location



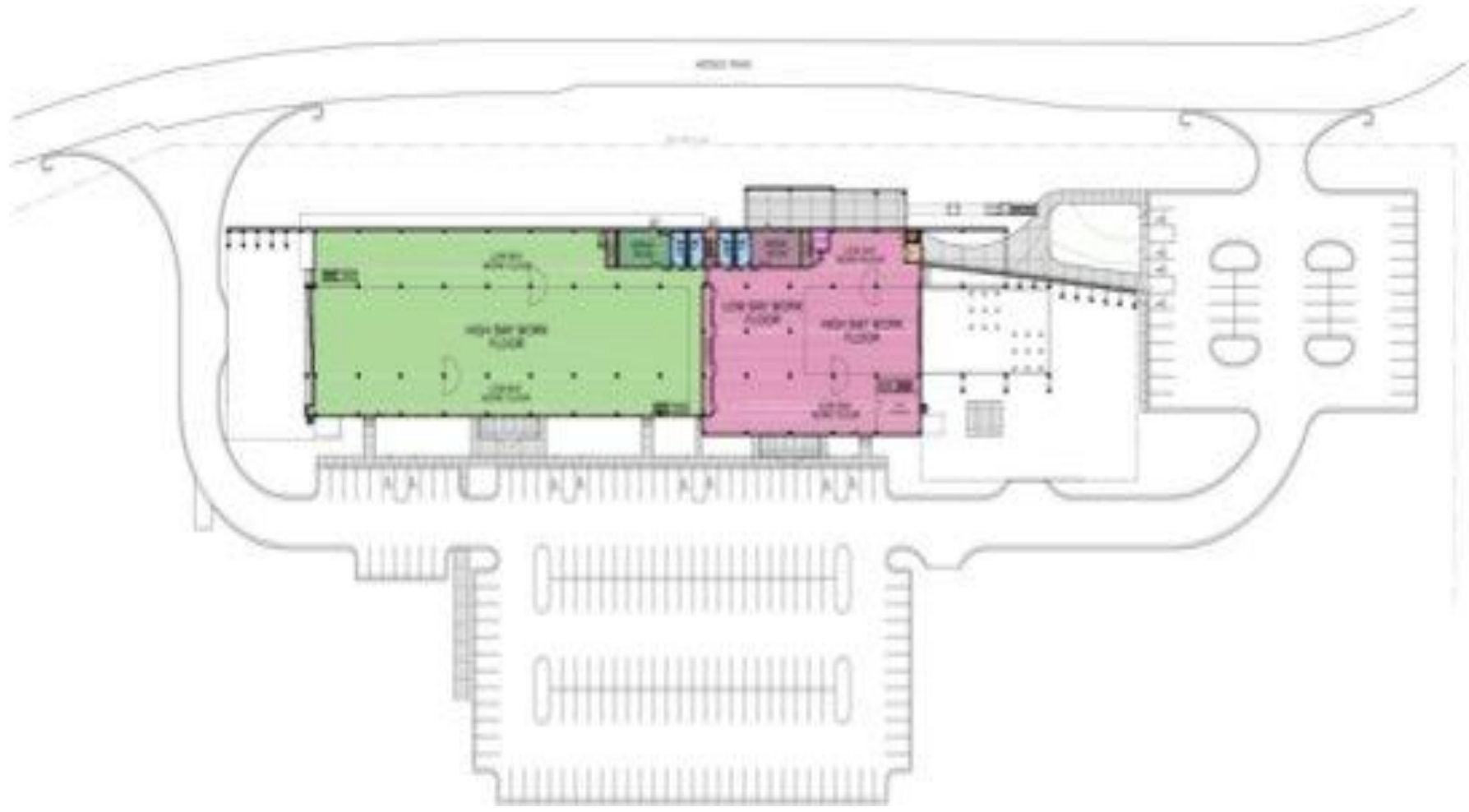
# Artist Rendition of Location



# Artist Rendition of Building



# Layout of Building and Parking



# Detailed Layout of Building



# MARITIME SCIENCE CENTER

- Equipment – Move from Current Location
  - NDT Lab Equipment
  - Plasma Table, etc
  - Computer Room
  - Maintenance Training Shop
- Curriculum ( N.C.C.E.R., G.S.S.C., & Partners )
- Staff
- Operation
- OSHA Maritime Safety Training
- Expanded Curriculum (Crane, Forklift, Scaffold)